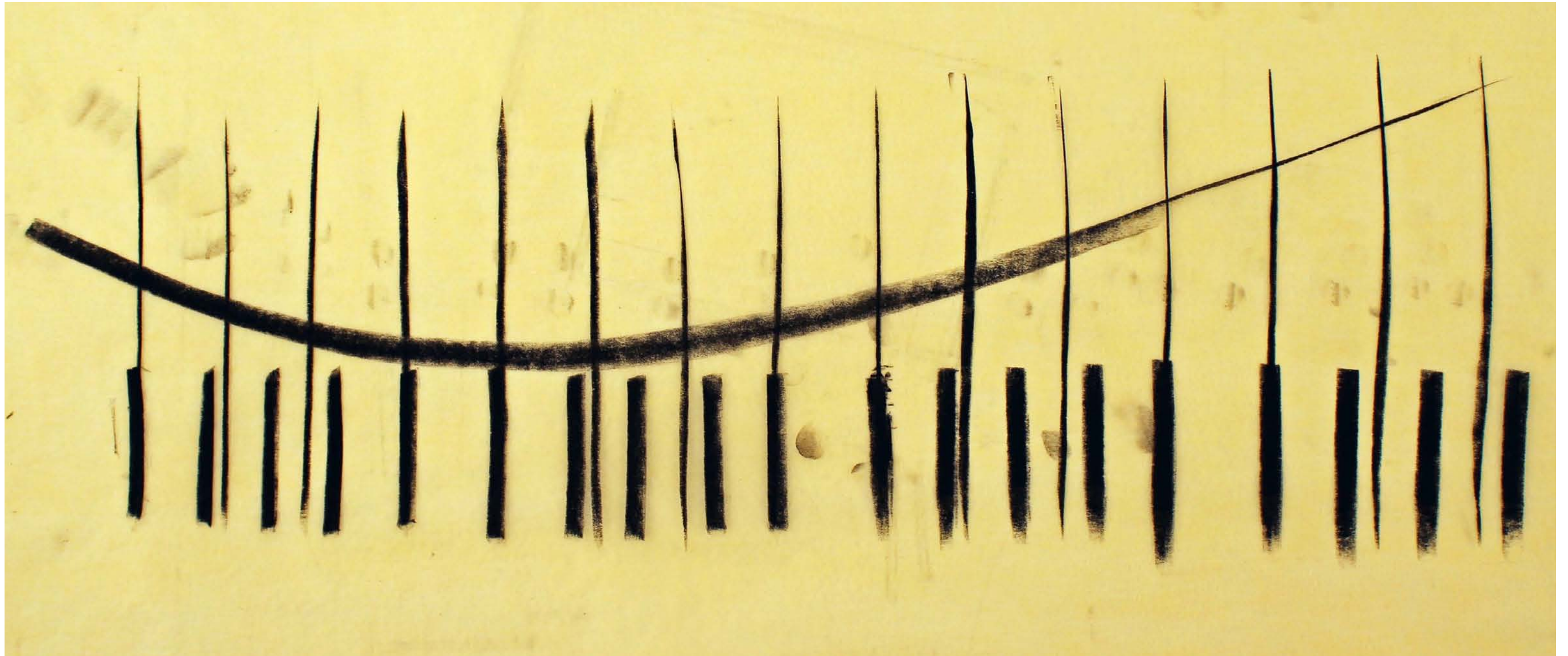


UNIVERSITY OF OREGON
OREGON BACH FESTIVAL

CPC Presentation
February 11, 2016

HACKER



LARGE SCALE CAMPUS

Campus Trees
Good Neighbor
Main Gateways
Open-Space Framework
Open University
Outdoor Classroom
Sustainable Development
Universal Access
Welcoming To All

TRANSPORTATION

Bike Paths, Racks, And Lockers
Local Transportation Area
Looped Local Roads
Paths And Goals
Pedestrian Pathways
Peripheral Parking
Shielded Parking And Service Areas
Spillover Parking
Road Crossings

SITE ARRANGEMENT

Activity Nodes
Building Complex
Connected Buildings
Existing Uses / Replacement
Family Of Entrances
Main Building Entrance
Positive Outdoor Space
Public Outdoor Room
Quiet Backs
Seat Spots
Site Repair
Sitting Wall
South Facing Outdoors
Tree Places
Use Wisely What We Have

BUILDING DESIGN

Four-Story Limit
Architectural Style
Operable Windows
Flexible and Longevity
Future Expansion
Wholeness of Project
Wings of Light
Quality of Light
Organizational Clarity
Building Hearth
Office Connections
Public Gradient
Fabric of Departments
No Signs Needed
Faculty-Student Mix
Places to Wait
Enough Storage
Building Character and Campus Context
Arcades
Pools of Light
Materials and Operations

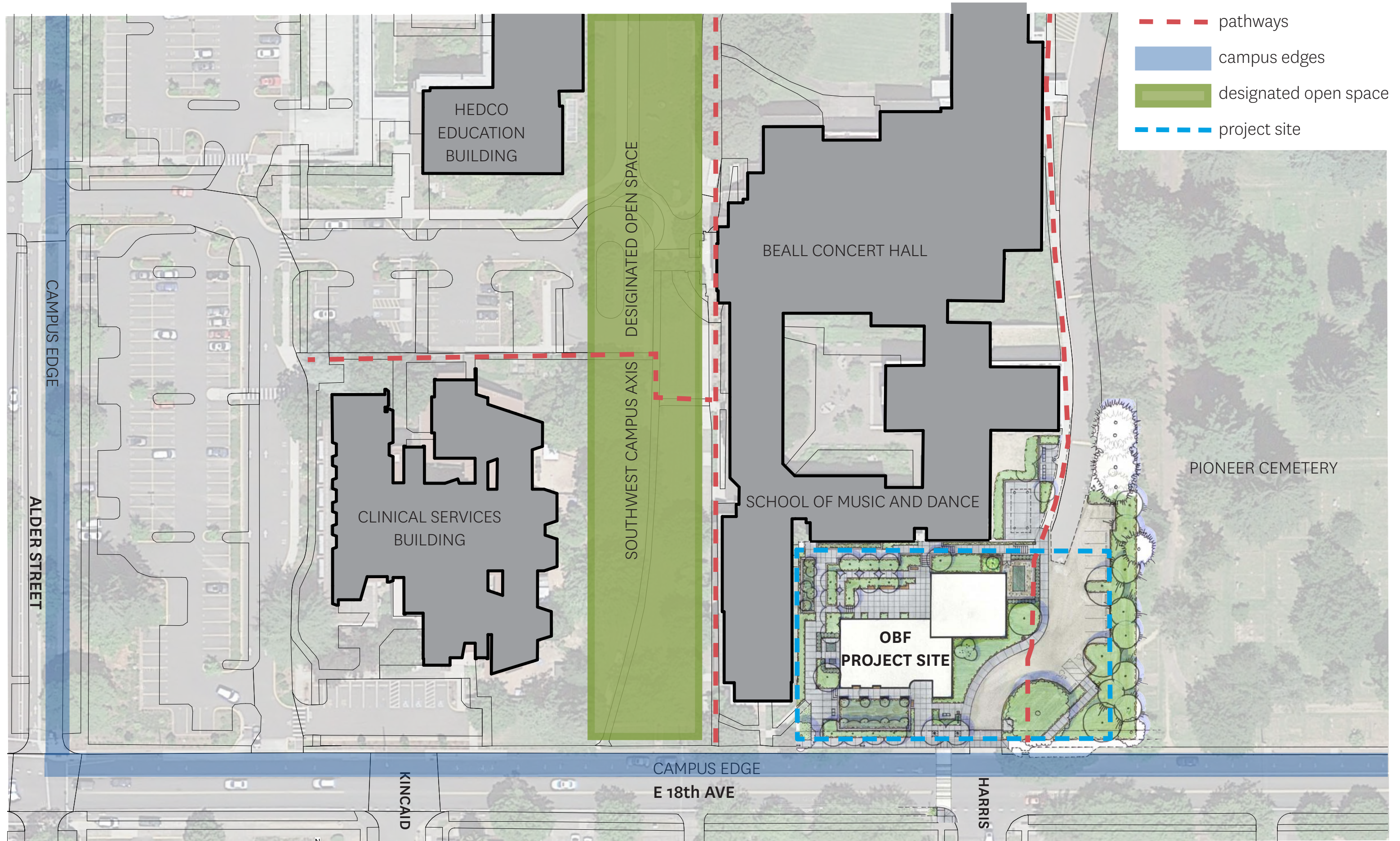
History and Identity

Gateway to Campus

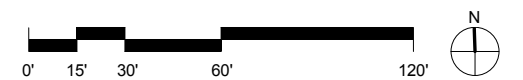
A Front Door

Series of Outdoor Courtyards

A Building Within a Building Within a Complex



- - - pathways
- campus edges
- designated open space
- - - project site



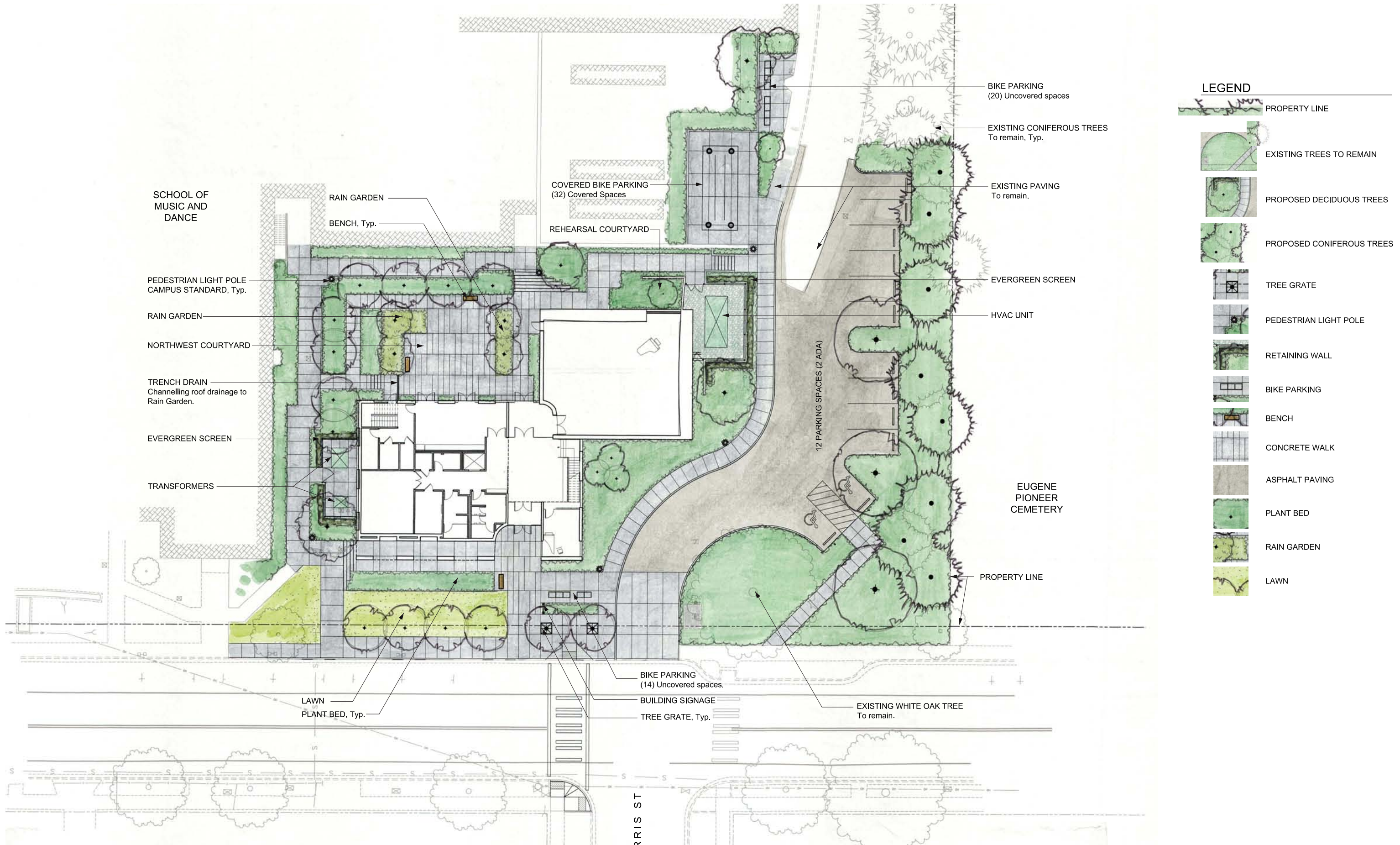
PREVIOUS CPC COMMENTS REGARDING SITE DESIGN:

Consider extending the concrete paving across the driveway to emphasize the pedestrian experience.

Consider simplifying the route from the east to the courtyard so that pedestrians are not going up and down stairs unnecessarily.

Attempt to maximize the effective size of the courtyard by reconsidering the position of the ramp. Take into consideration the need to move instruments through the courtyard.

Pay close attention to the quality of the pedestrian experience on the north-south pathway through the site.



Landscape

NATIVE TREES



Doug Fir



California Incense Cedar



Pacific Dogwood

TREES FOR STORMWATER PLATERS



Persian Parrotia



River Birch



Amelanchier



Katsura

TREES ON 18TH



Vine Maple



Rocky Mountain Maple



Stewartia



Columnar Tulip Tree



Seven Sons Tree



Pyramidal European Hornbeam

URBAN EDGE MASSINGS



CEMETERY PLANTING



STORMWATER PLANTERS



NORTH GREENROOF WALL AND HVAC SCREENING



CAMAS AT WHITE OAK TREE



COURTYARD



REHEARSAL ROOM GARDEN



Malus tschonoskii
Upright Crabapple



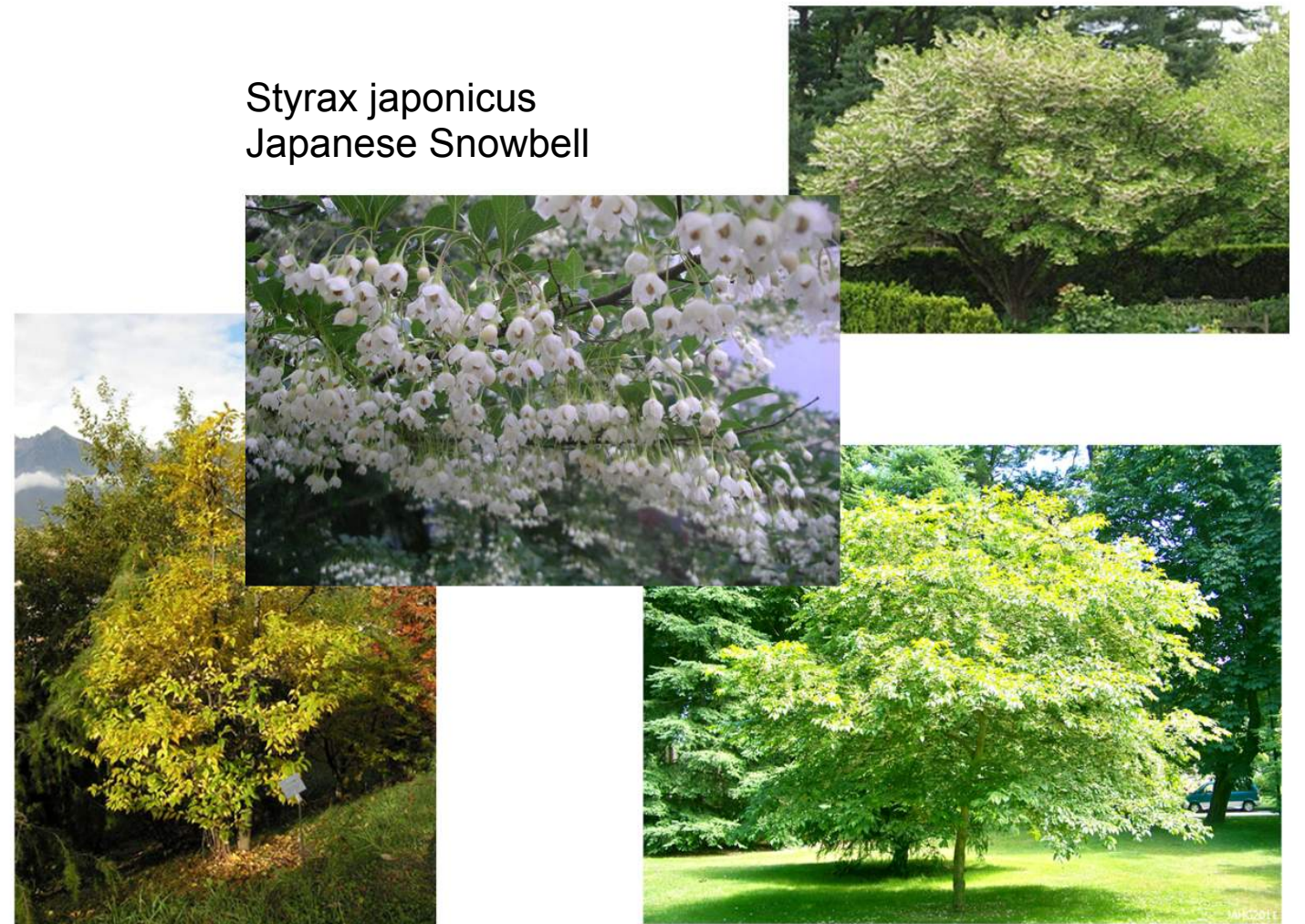
Stewartia japonica
Japanese Stewartia



Cornus 'Eddie's White Wonder'
Eddie's White Wonder Dogwood



Styrax japonicus
Japanese Snowbell

















University of Oregon
Oregon Bach Festival

SOUTH-WEST CORNER ALONG 18th AVE

HACKER





End